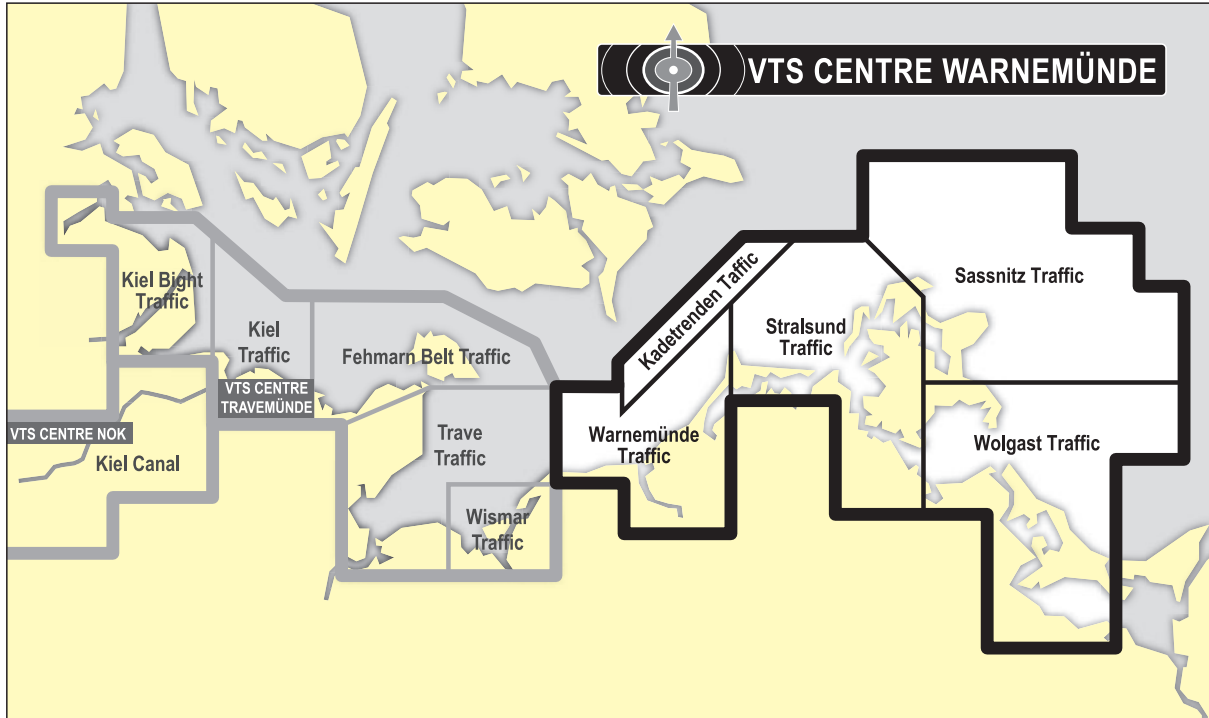


C 10 VTS Centre Warnemünde

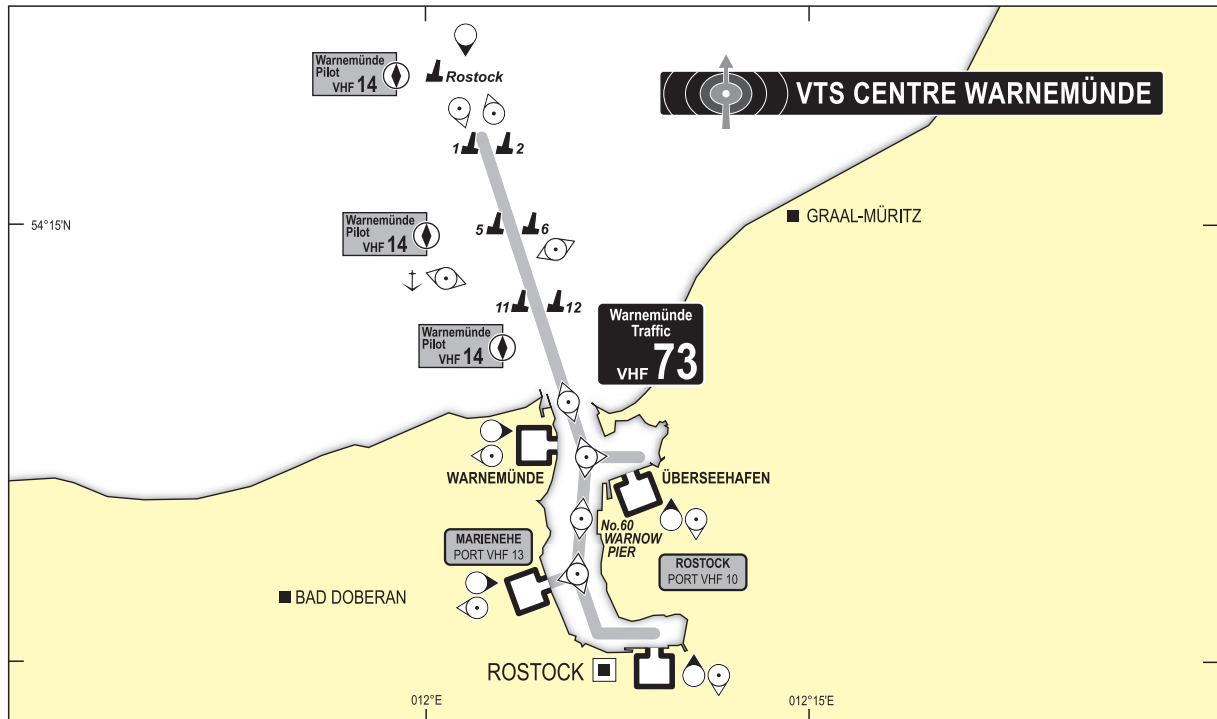
Overview Chart



C 10.1 Warnemünde Traffic

Vessel Traffic Service

Area
see diagram



Station

VTS Centre Warnemünde



Contact Details

Call	Warnemünde Traffic
Frequency	see diagram
Telephone	+49 (0) 3 81 20 67 18 41, 20 67 18 42
Fax	+49 (0) 3 81 20 67 18 45
E-mail	vkz-warnemuende@wsv.bund.de

Continuous listening watch

when entering on VHF working channel and VHF channel 16

Reports

Status	Who	When/Where	to whom	What
Sailing Plan 	<ul style="list-style-type: none"> vessels of 30 m in length or more, including pushed or towed composite units vessels carrying dangerous goods in bulk (gas / chemicals / petroleum / petroleum products) unloaded tankers if not cleaned, degassed or completely inerted after carrying petroleum / petroleum products / chemicals with a flash-point below 35 °C 	<ul style="list-style-type: none"> 30 min before entering the fairway for Rostock before leaving a harbour or berth within the VTS area 	Warnemünde Traffic	A vessel's name and call sign D vessel's position U vessel's length (metres), beam (decimetres) and type O vessel's draught (decimetres) G port of departure I port of destination P indication if liquefied gases, chemicals, or petroleum / petroleum products are / were carried in bulk, and in case: type, quantity, UN-number and if tanks are not cleaned or if they are completely inerted Q indication of deficiencies, restrictions of manoeuvrability T names of the vessel's owner or the latter's agents
Position Report 	vessels mandatory to report as for Sailing Plan	<ul style="list-style-type: none"> at reporting points shown on diagram after pilot embarkation when entering or leaving the fairway when turning in the Überseehafen turning basin – beginning and completion of the turning manoeuvre 	Warnemünde Traffic	A vessel's name and call sign B passing time D position F speed
Deviation Report	vessels mandatory to report as for Sailing Plan	in case of amendments of Sailing Plan (e. g. when entering / leaving an anchorage)	Warnemünde Traffic	amendments of Sailing Plan
Incident Report	all vessels	in case of an incident impairing safety or environment	Warnemünde Traffic	details of incident, in case of DG / HS / MP all data mentioned page 10

Rules

presuppositions for tankers carrying gas / chemicals / petroleum / petroleum products when entering the area of German Traffic Regulations for Navigable Maritime Waterways

all tankers

visibility more than 1,000 m

radar and VHF in operational state

tankers up to 2,000 tdw

visibility between 500 m and 1,000 m

tankers exceeding 2,000 tdw, but not exceeding 140 m in length or 8.50 m in draught

only with permission of the VTS Centre

Services

Information Service

- situation broadcast

- times

- every h + 15 min

- single reports if the VTS considers it necessary or on request

- frequencies

- see diagram

- languages

- English and German

- content

- information relevant to the safe passage through the VTS area

- general fairway and traffic situation (e. g. weather conditions, casualties, dredging operations, pilot information)

Navigational Assistance Service

- not provided in the VTS area

Traffic Regulation Service

- by instruction

- regulatory measures to prevent accidents and / or threat to the environment

- traffic management

Maritime Assistance Service

- in the event of an incident involving a ship

- receive the reports, consultations and notifications

- if a report discloses an incident that may give rise to a situation where the ship is in need of assistance

- monitor the ship's situation

- serve as the point of contact

- between the master and the coastal State if the ship's situation requires exchanges of information between the ship and the coastal State other than a distress situation that could lead to a search and rescue operation

- between those involved in a marine salvage operation undertaken by private facilities at the request of the company and the coastal State if the coastal State considers that it should monitor the conduct of the operation

Pilotage

Pilot District

- Rostock Warnemünde and River Warnow

Pilot Service

- pilotage compulsory

- tankers carrying gas / chemicals / petroleum / petroleum products in bulk, or unloaded tankers, if not cleaned, degassed or completely inerted after having carried petroleum / petroleum products or chemicals with a flashpoint below 35 °C

- other vessels

- from Rostock Approach to the berth No 60 Warnowpier

- of 100 m in length or 15 m in beam or 7.5 m in draught or more

- from berth No 60 Warnowpier to light-buoy "59/M2"

- of 80 m in length or 11 m in beam or 6 m in draught or more

- from light-buoy "59/M2" upriver to Stadthafen Rostock

- of 60 m in length or 10 m in beam or 4.5 m in draught or more

Contact Details

Warnemünde Pilot Station

Call Warnemünde Pilot
 Frequency VHF channel 14, 16
 Telephone +49 (0) 3 81 2 06 03 50
 Fax +49 (0) 3 81 2 06 03 51
 E-mail station@rostockpilot.de
 Internet www.wismar-rostock-stralsund-pilots.de

Pilot Vessel

Call Warnemünde Pilot
 Frequency VHF channel 14

Pilot request

Status	Who	When/Where	to whom	What
Arrival	pilotage compulsory vessels	at least 3 hrs before arrival at boarding position	Warnemünde Pilot Station	– vessel's name, call sign – length, beam and gross tonnage (GT)
Departure	pilotage compulsory vessels	• at least 3 hrs before departure – departures between 1900–0700 request pilot before 1700	Warnemünde Pilot Station	– ETA at pilot boarding position – destination of pilotage required – actual draught – speed – agency

Pilot boards

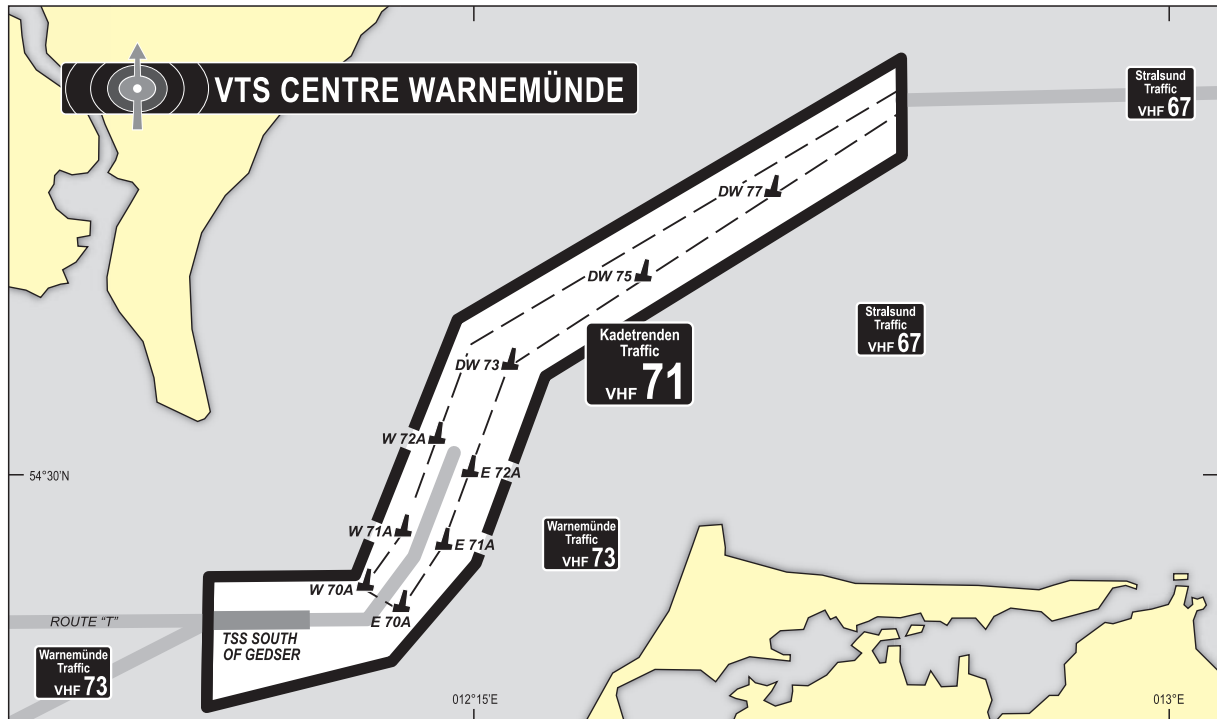
Boarding place

near light-buoy "Rostock" (vessels over 11.58 m draught)
 near light-buoy "5" (vessels over 6.5 m draught)
 near light-buoy "11" (vessels of 6.5 m draught or less)

C 10.2 Kadetrenden Traffic

Vessel Traffic Service

Area
see diagram



Station

VTS Centre Warnemünde

Contact Details

Call	Kadetrenden Traffic
Frequency	see diagram
Telephone	+49 (0) 3 81 20 67 18 41, 20 67 18 43
Fax	+49 (0) 3 81 20 67 18 45
E-mail	vkz-warnemuende@wsv.bund.de

Continuous listening watch

when entering on VHF working channel and VHF channel 16

Reports

no verbal reports required
reporting data will be collected by using AIS data

Services

Information Service

situation broadcast

times

every h + 00 min

single reports if the VTS considers it necessary or on request

frequencies

see diagram

languages

German and English

content

information relevant to the safe passage through the VTS area

general fairway and traffic situation (e. g. weather conditions, casualties, dredging

operations, pilot information)

Traffic Regulation Service

by instruction

regulatory measures to prevent accidents and / or threat to the environment

traffic management

Maritime Assistance Service

in the event of an incident involving a ship

receive the reports, consultations and notifications

if a report discloses an incident that may give rise to a situation where the ship is in need of assistance

monitor the ship's situation

serve as the point of contact

between the master and the coastal State if the ship's situation requires exchanges of information between the ship and the coastal State other than a distress situation that could lead to a search and rescue operation

between those involved in a marine salvage operation undertaken by private facilities at the request of the company and the coastal State if the coastal State considers that it should monitor the conduct of the operation

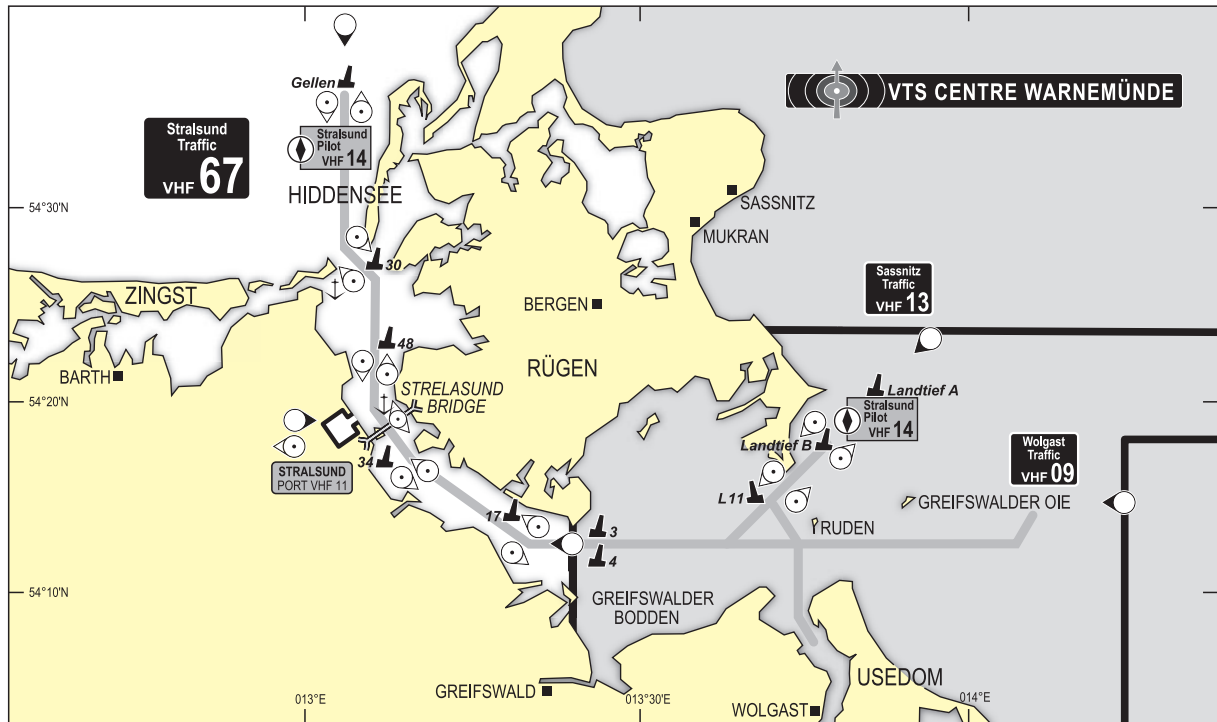
Pilotage

no pilotage available

C 10.3 Stralsund Traffic

Vessel Traffic Service

Area
see diagram



Station

VTS Centre Warnemünde



Contact Details

Call	Stralsund Traffic
Frequency	see diagram
Telephone	+49 (0) 3 81 20 67 18 43
Fax	+49 (0) 3 81 20 67 18 46
E-mail	vkz-warnemuende@wsv.bund.de

Continuous listening watch

when entering on VHF working channel and VHF channel 16

Reports

Status	Who	When/Where	to whom	What
Sailing Plan 	<ul style="list-style-type: none"> vessels of 20 m in length or more, including pushed or towed composite units vessels carrying dangerous goods in bulk (gas / chemicals / petroleum / petroleum products) unloaded tankers if not cleaned, degassed or completely inerted after carrying petroleum / petroleum products / chemicals with a flash-point below 35 °C 	<ul style="list-style-type: none"> when entering the VTS area <ul style="list-style-type: none"> from north 30 min before passing light-buoy "Gellen" from east when passing light-buoys 3 and 4 before leaving a harbour or berth within the VTS area 	Stralsund Traffic	A vessel's name and call sign D vessel's position U vessel's length (metres), beam (decimetres) and type O vessel's draught (decimetres) G port of departure I port of destination P indication if liquefied gases, chemicals, or petroleum / petroleum products are / were carried in bulk, and in case: type, quantity, UN-number and if tanks are not cleaned or if they are completely inerted Q indication of deficiencies, restrictions of manoeuvrability T names of the vessel's owner or the latter's agents
Position Report 	vessels mandatory to report as for Sailing Plan	<ul style="list-style-type: none"> at reporting points shown on diagram after pilot embarkation when entering or leaving the fairway 	Stralsund Traffic	A vessel's name and call sign B passing time D position F speed
Deviation Report	vessels mandatory to report as for Sailing Plan	in case of amendments of Sailing Plan (e. g. when entering / leaving an anchorage)	Stralsund Traffic	amendments of Sailing Plan
Incident Report	all vessels	in case of an incident impairing safety or environment	Stralsund Traffic	details of incident, in case of DG / HS / MP all data mentioned page 10

Rules

presuppositions for tankers carrying gas / chemicals / petroleum / petroleum products when entering the area of German Traffic Regulations for Navigable Maritime Waterways

all tankers

visibility more than 1,000 m

radar and VHF in operational state

tankers up to 2,000 tdw

visibility between 500 m and 1,000 m

tankers exceeding 2,000 tdw

S e r v i c e s

Information Service

situation broadcast

times

every h + 35 min

single reports if the VTS considers it necessary or on request

frequencies

see diagram

languages

English and German

content

information relevant to the safe passage through the VTS area

general fairway and traffic situation (e. g. weather conditions, casualties, dredging operations, pilot information)

Navigational Assistance Service

not provided in the VTS area

Traffic Regulation Service

by instruction

regulatory measures to prevent accidents and / or threat to the environment

traffic management

Maritime Assistance Service

in the event of an incident involving a ship

receive the reports, consultations and notifications

if a report discloses an incident that may give rise to a situation where the ship is in need of assistance

monitor the ship's situation

serve as the point of contact

between the master and the coastal State if the ship's situation requires exchanges of information between the ship and the coastal State other than a distress situation that could lead to a search and rescue operation

between those involved in a marine salvage operation undertaken by private facilities at the request of the company and the coastal State if the coastal State considers that it should monitor the conduct of the operation

Pilotage**Pilot District**

Stralsund N and E approach
waters around Rügen and Usedom up to the Polish border

Pilot Service

pilotage compulsory
tankers carrying gas / chemicals / petroleum / petroleum products in bulk, or unloaded tankers, if not cleaned, degassed or completely inerted after having carried petroleum / petroleum products or chemicals with a flashpoint below 35 °C
vessels of 60 m in length or more or 10 m in beam or more or 3.3 m in draught or more

Contact Details**Stralsund Pilot Station**

Call Stralsund Pilot
Frequency VHF channel 14, 16
Telephone +49 (0) 38 31 28 06 33
Fax +49 (0) 38 31 29 70 33
E-mail station@stralsundpilot.de
Internet www.wismar-rostock-stralsund-pilots.de

Pilot Vessel

Call Stralsund Pilot
Frequency VHF channel 14

Pilot request

Status	Who	When/Where	to whom	What
Arrival	pilotage compulsory vessels	at least 6 hrs before arrival at boarding position	Stralsund Pilot Station	<ul style="list-style-type: none"> – vessel's name, call sign – length, beam and gross tonnage (GT) – ETA at pilot boarding position – destination of pilotage required – actual draught – speed – agency
Departure	pilotage compulsory vessels	<ul style="list-style-type: none"> • at least 4 hrs before departure (from Stralsund 3 hrs only) – departures between 1900–0700 request pilot before 1700 	Stralsund Pilot Station	

Pilot boards**Boarding place****N-Approach**

near light-buoy "1"

E-approach and for Sassnitz and Wolgast

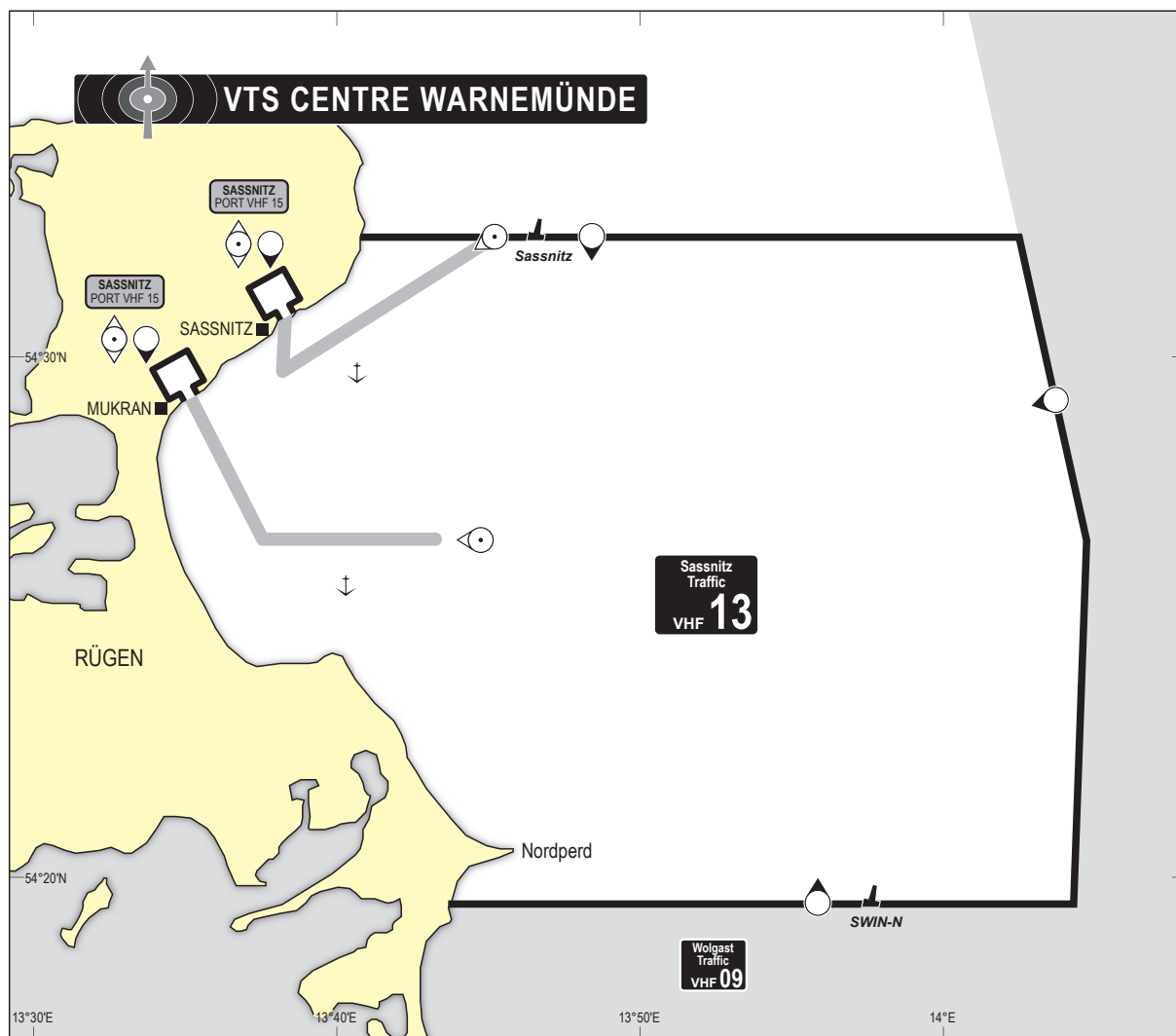
near light-buoy "Landtief B"

near light-buoy "Osttief 2"

C 10.4 Sassnitz Traffic

Vessel Traffic Service

Area
see diagram



Station

VTS Centre Warnemünde



Contact Details

Call	Sassnitz Traffic
Frequency	see diagram
Telephone	+49 (0) 3 81 20 67 18 44
Fax	+49 (0) 3 81 20 67 18 46
E-mail	vkz-warnemuende@wsv.bund.de

Continuous listening watch

when entering on VHF working channel and VHF channel 16

Reports

Status	Who	When/Where	to whom	What
Sailing Plan 	<ul style="list-style-type: none"> vessels of 20 m in length or more, including pushed or towed composite units vessels carrying dangerous goods in bulk (gas / chemicals / petroleum / petroleum products) unloaded tankers if not cleaned, degassed or completely inerted after carrying petroleum / petroleum products / chemicals with a flash-point below 35 °C 	<ul style="list-style-type: none"> when passing light-buoy "Sassnitz" from south at reporting point shown on diagram before leaving a harbour or berth within the VTS area 	Sassnitz Traffic	A vessel's name and call sign D vessel's position U vessel's length (metres), beam (decimetres) and type O vessel's draught (decimetres) G port of departure I port of destination P indication if liquefied gases, chemicals, or petroleum / petroleum products are / were carried in bulk, and in case: type, quantity, UN-number and if tanks are not cleaned or if they are completely inerted Q indication of deficiencies, restrictions of manoeuvrability T names of the vessel's owner or the latter's agents
Position Report 	vessels of 20 m in length and more	<ul style="list-style-type: none"> at reporting points shown on diagram after berthing and 10 min before departure 	Sassnitz Port on VHF channel 15	A vessel's name and call sign B passing time D position F speed
Deviation Report	vessels mandatory to report as for Sailing Plan	in case of amendments of Sailing Plan (e. g. when entering / leaving an anchorage)	Sassnitz Traffic	amendments of Sailing Plan
Incident Report	all vessels	in case of an incident impairing safety or environment	Sassnitz Traffic	details of incident, in case of DG / HS / MP all data mentioned page 10

Rules

presuppositions for tankers carrying gas / chemicals / petroleum / petroleum products when entering the area of German Traffic Regulations for Navigable Maritime Waterways

all tankers

visibility more than 1,000 m

radar and VHF in operational state

tankers up to 2,000 tdw

visibility between 500 m and 1,000 m

S e r v i c e s

Information Service

situation broadcast

times

every h + 15 min

single reports if the VTS considers it necessary or on request

frequencies

see diagram

languages

English and German

content

information relevant to the safe passage through the VTS area

general fairway and traffic situation (e. g. weather conditions, casualties, dredging operations, pilot information)

Navigational Assistance Service

not provided in the VTS area

Traffic Regulation Service

by instruction

regulatory measures to prevent accidents and / or threat to the environment

traffic management

Maritime Assistance Service

in the event of an incident involving a ship

receive the reports, consultations and notifications

if a report discloses an incident that may give rise to a situation where the ship is in need of assistance

monitor the ship's situation

serve as the point of contact

between the master and the coastal State if the ship's situation requires exchanges of information between the ship and the coastal State other than a distress situation that could lead to a search and rescue operation

between those involved in a marine salvage operation undertaken by private facilities at the request of the company and the coastal State if the coastal State considers that it should monitor the conduct of the operation

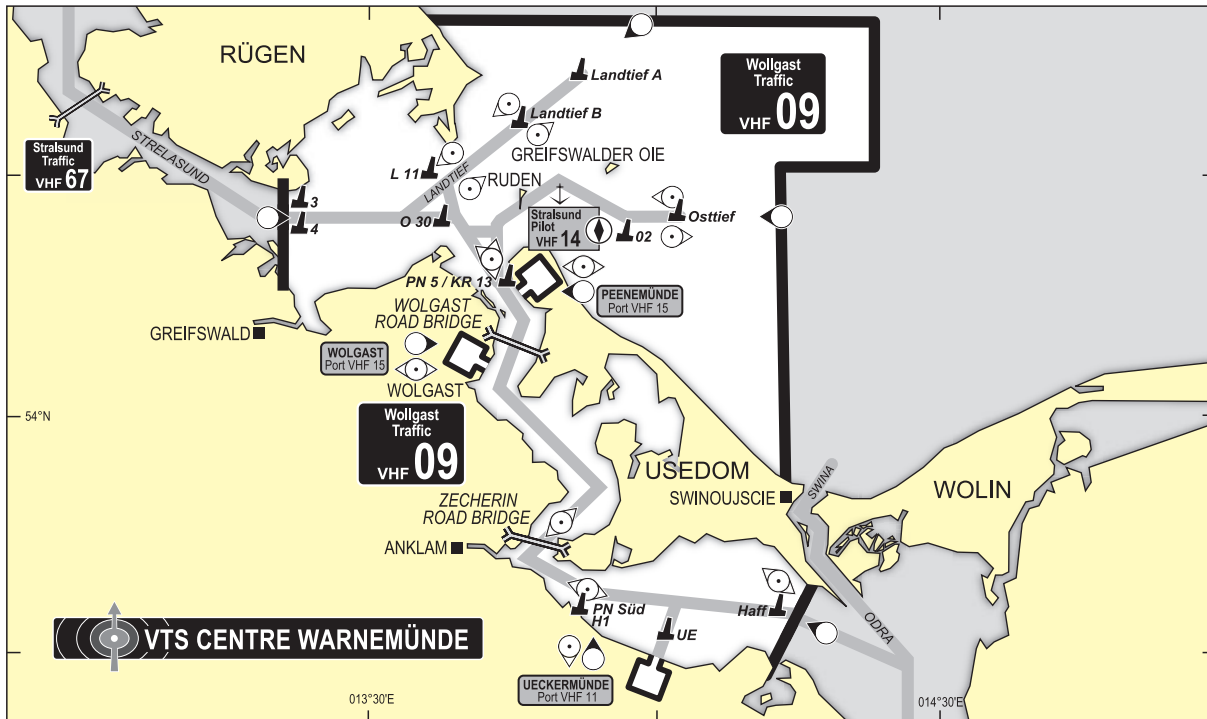
Pilotage see Stralsund Pilot on page 100

C 10.5 Wolgast Traffic

Vessel Traffic Service

Area

see Diagram



Station

VTS Centre Warnemünde



Contact Details

Call	Wolgast Traffic
Frequency	see diagram
Telephone	+49 (0) 3 81 20 67 18 44
Fax	+49 (0) 3 81 20 67 18 46
E-mail	vkz-warnemuende@wsv.bund.de

Continuous listening watch

when entering on VHF working channel and VHF channel 16

Reports

Status	Who	When/Where	to whom	What
Sailing Plan 	<ul style="list-style-type: none"> vessels of 20 m in length or more, including pushed or towed composite units vessels carrying dangerous goods in bulk (gas / chemicals / petroleum / petroleum products) unloaded tankers if not cleaned, degassed or completely inerted after carrying petroleum / petroleum products / chemicals with a flash-point below 35 °C 	<ul style="list-style-type: none"> when entering the VTS area from sea 30 minutes before passing light-buoy "Osttief" or light-buoy "Landtief B" or light-buoy "Haff" when changing the VTS area at light-buoy 3 and 4 before leaving a harbour or berth within the VTS area 	Wolgast Traffic	A vessel's name and call sign D vessel's position U vessel's length (metres), beam (decimetres) and type O vessel's draught (decimetres) G port of departure I port of destination P indication if liquefied gases, chemicals, or petroleum / petroleum products are / were carried in bulk, and in case: type, quantity, UN-number and if tanks are not cleaned or if they are completely inerted Q indication of deficiencies, restrictions of manoeuvrability T names of the vessel's owner or the latter's agents
Position Report 	vessels mandatory to report SP	<ul style="list-style-type: none"> at reporting points shown on diagram after pilot embarkation when leaving the fairway 	Wolgast Traffic	A vessel's name and call sign B passing time D position F speed
Deviation Report	vessels mandatory to report as for Sailing Plan	in case of amendments of Sailing Plan (e. g. when entering / leaving an anchorage)	Wolgast Traffic	amendments of Sailing Plan
Incident Report	all vessels	in case of an incident impairing safety or environment	Wolgast Traffic	details of incident, in case of DG / HS / MP all data mentioned page 10

Rules

presuppositions for tankers carrying gas / chemicals / petroleum / petroleum products when entering the area of German Traffic Regulations for Navigable Maritime Waterways

all tankers

visibility more than 1,000 m

radar and VHF in operational state

tankers up to 2,000 tdw

visibility between 500 m and 1,000 m

S e r v i c e s

Information Service

situation broadcast

times

every h + 15 min

single reports if the VTS considers it necessary or on request

frequencies

see diagram

languages

English and German

content

information relevant to the safe passage through the VTS area

general fairway and traffic situation (e. g. weather conditions, casualties, dredging

operations, pilot information)

Navigation Assistance Service

not provided in the VTS area

Traffic Regulation Service

by instruction

regulatory measures to prevent accidents and / or threat to the environment

traffic management

Maritime Assistance Service

in the event of an incident involving a ship

receive the reports, consultations and notifications

if a report discloses an incident that may give rise to a situation where the ship is in need of assistance

monitor the ship's situation

serve as the point of contact

between the master and the coastal State if the ship's situation requires exchanges of information between the ship and the coastal State other than a distress situation that could lead to a search and rescue operation

between those involved in a marine salvage operation undertaken by private facilities at the request of the company and the coastal State if the coastal State considers that it should monitor the conduct of the operation

Pilotage see Stralsund Pilot on page 100

Additional Services**S e r v i c e**

Ueckermünde Port Traffic Control


C o n t a c t D e t a i l s

Ueckermünde Port

Call Ueckermünde Port

Frequency VHF channel 11

R e p o r t s

Status	Who	When/Where	to whom	What
Sailing Plan 	vessels of 5 m in beam or more (including pushed or towed composite units)	<ul style="list-style-type: none"> • 10 min before passing buoy "UE" • before leaving berth 	Ueckemünde Port	A vessel's name and call sign D vessel's position U vessel's length (metres), beam (decimetres) and type O vessel's draught (decimetres) G port of departure I port of destination P indication if liquefied gases, chemicals, or petroleum / petroleum products are / were carried in bulk, and in case: type, quantity, UN-number and if tanks are not cleaned or if they are completely inerted Q indication of deficiencies, restrictions of manoeuvrability T names of the vessel's owner or the latter's agents